

141. Match column-I with column-II and choose the correct option.

Column-I**(Members of Fabaceae)**

- A. Gram, sem, moong,soyabean
 B. Soyabean,groundnut
 C. Indigofera
 D. Sunhemp
 E. Sesbania, Trifolium
 F. Lupin, sweet potato
 G. Muliathi

Column-II**(Economic importance)**

- I. Medicine
 II. Ornamental
 III. Fodder
 IV. Fibres
 V. Dye
 VI. Edible oil
 VII. Pulses

- (1) A - I, B - II, C - III, D - IV, E - V, F - VI, G - VII
 (2) A - VII, B - VI, C - V, D - IV, E - III, F - II, G - I
 (3) A - II, B - IV, C - VI, D - I, E - III, F - V, G - VII
 (4) A - I, B - III, C - V, D - VII, E - II, F - IV, G - VI

142. Match the column I with column II and choose the correct option.

Column I

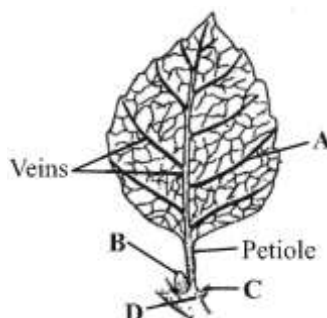
- A. Placentation
 B. Aestivation
 C. Inflorescence
 D. Flower

Column II

- (i) Arrangement of flowers on the rachis
 (ii) Modified shoot for sexual reproduction
 (iii) Arrangement of various whorls in the bud
 (iv) Arrangement of ovules within an ovary

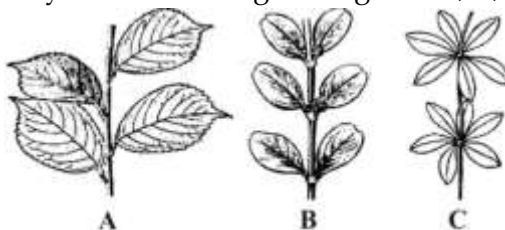
- | A | B | C | D |
|-----------|----------|----------|----------|
| (1) (i) | (ii) | (iii) | (iv) |
| (2) (iii) | (i) | (ii) | (iv) |
| (3) (iii) | (i) | (iv) | (ii) |
| (4) (iv) | (iii) | (i) | (ii) |

143. Which of the following option shows the correct labelling of the parts of leaf marked as A, B, C and D.



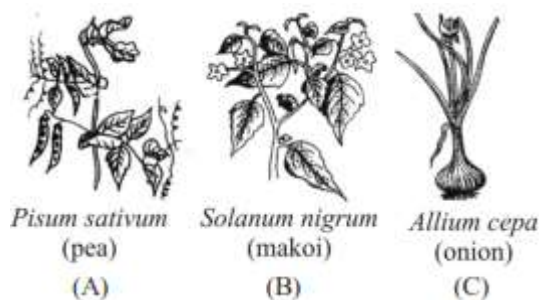
- | A | B | C | D |
|-------------|--------------|--------------|-----------|
| (1) Lamina | Axillary bud | Stipule | Leaf base |
| (2) Lamina | Stipule | Axillary bud | Leaf base |
| (3) Lamina | Axillary bud | Stipule | Pedicel |
| (4) Leaflet | Axillary bud | Stipule | Leaf base |

144. Identify the kind of phyllotaxy shown in the given figures A, B, and C.



- (1) A-Alternate, B - Opposite, C - Whorled
 (2) A- Whorled, B - Opposite, C -Alternate
 (3) A-Alternate, B - Whorled, C - Opposite
 (4) A-Whorled, B -Alternate, C - Opposite

145. Identify the correct families of the given plant species (A, B and C)



- (1) A - Liliaceae, B - Compositae, C - Malvaceae
 (2) A - Fabaceae, B - Solanaceae, C - Liliaceae
 (3) A - Compositae, B - Malvaceae, C - Liliaceae
 (4) A - Solanaceae, B - Fabaceae, C - Liliaceae
146. Aleurone layer helps in
- (1) storage of food in endosperm. (2) protection of embryo.
 (3) utilization of stored food. (4) all of the above.
147. Fibrous root system is better adopted than tap root system for
- (1) transport of organic matter. (2) absorption of water and minerals.
 (3) storage of food. (4) anchorage of plant to soil.
148. Which is not a stem modification ?
- (1) Rhizome of ginger (2) Corm of *Colocasia*
 (3) Pitcher of *Nepenthes* (4) Tuber of potato
149. The character of flower which is represented by floral formula but not by floral diagram is
- (1) aestivation
 (2) placentation
 (3) position of gynoecium
 (4) adhesion of stamen
150. Which of the following represents the floral characters of liliaceae?
- (1) Six tepals, zygomorphic, six stamens, bilocular ovary, axile placentation.
 (2) Actinomorphic, polyphyllous, unilocular ovary, axile placentation.
 (3) Tricarpellary, actinomorphic, polyandrous, superior ovary, axile placentation.
 (4) Bisexual, zygomorphic, gamophyllous, inferior ovary, marginal placentation.