

111. Which one of the following organisms is correctly matched with its three characteristics?

- (1) Pea: C_3 pathway, Endospermic seed, Vexillary aestivation
- (2) Tomato: Twisted aestivation, Axile placentation, Berry
- (3) Onion: Bulb, Valvate aestivation, Axile placentation
- (4) Maize: C_3 pathway, Closed vascular bundles, Scutellum

112. Choose the correct option.

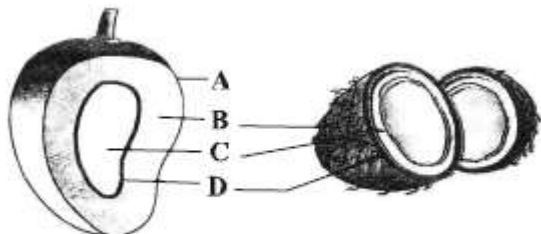


Figure -I

Figure -II

- (1) A-Epicarp, B-Mesocarp, C-Seed, D-Endocarp
- (2) A-Epicarp, B-Mesocarp, C-Ovule, D-Endocarp
- (3) A-Epicarp, B-Mesocarp, C-Ovary, D-Endocarp
- (4) A-Epicarp, B-Mesocarp, C-Embryo, D- Endocarp

113. Match Column - I with Column - II

Column I

- A. Apple
- B. Coconut
- C. Jack fruit
- D. Guava
- E. Pineapple

Column II

- (1) Outer portion of receptacle
- (2) Fleshy thalamus
- (3) Thalamus & pericarp
- (4) Endosperm
- (5) Bract, perianth & seeds

- (1) A → (2); B → (3); C → (4); D → (5); E → (1)
- (2) A → (5); B → (3); C → (1); D → (4); E → (2)
- (3) A → (2); B → (3); C → (1); D → (5); E → (4)
- (4) A → (2); B → (4); C → (5), D → (3); E → (1)

114. Match the column - I with column - II and choose the correct option -

Column - I

(Types of aestivation)

- (A) Valvate
- (B) Twisted
- (C) Imbricate
- (D) Vexillary

Column - II

(Examples).

- | |
|----------------|
| (1) Cotton |
| (2) Calotropis |
| (3) Bean |
| (4) Gulmohar |
- (1) A - 1 ; B - 2 ; C - 4 ; D - 3
 - (2) A - 2 ; B - 1 ; C - 4 ; D - 3
 - (3) A - 2 ; B - 4 ; C - 1 ; D - 3
 - (4) A - 2 ; B - 1 ; C - 3 ; D - 4

115. Which of the following groups of plants have underground stems?

- (1) Potato, ginger, turmeric, Euphorbia, zaminkand
- (2) Potato, ginger, turmeric, zaminkand, Colocasia
- (3) Potato, Citrus, Opuntia, zaminkand, Colocasia
- (4) Potato, cucumber, watermelon, zaminkand, Colocasia

116. Stem tendrils are found in

- (1) Cucumber
- (2) Pumpkins
- (3) Grapevines
- (4) All of these

117. A branch in which each node bearing a rosette of leaves and a tuft of roots is found in aquatic plants like _____ and _____.

- (1) Hydrilla and Pistia
- (2) Eichhornia and Hydrilla
- (3) Pistia and Eichhornia
- (4) Pistia and Vallisneria

118. In which of the following plants, a slender lateral branch arises from the base of the main axis, and after growing aurally arch downwards to touch the ground?
- (1) Mint and jasmine (2) Banana and pineapple
(3) Grass and stawberry (4) *Pistia* and *Eichhornia*
119. Alternate type of phyllotaxy is found in
- (1) china rose (2) mustard (3) sunflower (4) all of these
120. When a flower can be divided into two equal radial halves in any radial plane passing through the centre, it is known as
- (1) actinomorphic (2) zygomorphic (3) asymmetric (4) bisymmetric