

171. (2) Binomial nomenclature - Carolus Linnaeus

Generic name	-	Panthera
Family	-	Muscidae
Systema naturae	-	Carolus Linnaeus

172. (1) Species → Genus → Family

173. (4) Genera - Solanum, Petunia, Datura

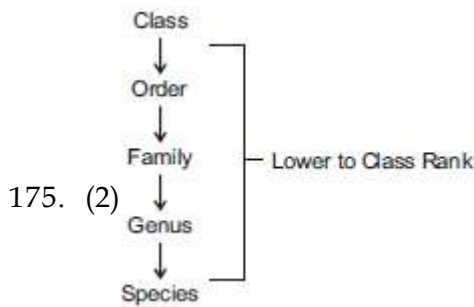


Family - Solanaceae

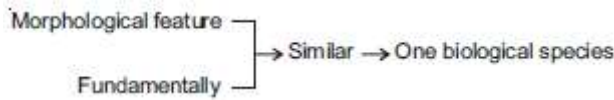
174. (4) Animal - Cat Dog



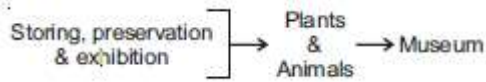
Family - Felidae Canidae



176. (1)



177. (3)



178. (4) Herbarium consists of dried, pressed and preserved plant specimens.

179. (3) Key, a taxonomical aid, used for classification.

180. (3) Zoological parks, animals are kept in protected environments under human care.