

# BIOLOGY

51. The pituitary gland is located in a bony cavity called \_\_\_\_\_ and is attached to \_\_\_\_\_ by a stalk –

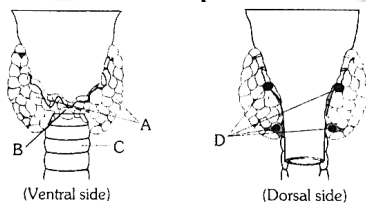
- (1) Sella tursica, hypothalamus
- (2) Sella tursica, cerebrum
- (3) Sella tursica, thyroid
- (4) Sella tursica, pineal

52. Which of the following options is not true?

[NCERT XI Pg. 333]

- (1) In males, LH stimulates synthesis and secretion of androgens (Testosterone) from testis.
- (2) In males, FSH and androgens regulate spermatogenesis
- (3) In female, LH induces ovulation of fully mature follicles (graafian follicles), and maintains corpus luteum.
- (4) FSH is produced in only male

53. Observe the following figures. Identify A to D –  
[NCERT XI Pg. 334]



- (1) A - Parathyroid gland, B - Isthmus, C - Trachea, D - Thyroid
- (2) A - Thyroid, B - Isthmus, C - Trachea, D - Parathyroid gland
- (3) A - Thyroid, B - Isthmus, C - Larynx, D - Parathyroid gland
- (4) A Thyroid, B - Corpus luteum, C - Trachea, D - Parathyroid gland

54. In humans, \_\_\_\_\_ parathyroid glands are present on \_\_\_\_\_ side of \_\_\_\_\_ gland –

[NCERT XI Pg. 335]

- (1) 2, back, thyroid glands
- (2) 4, back, thyroid glands
- (3) 4, front, thyroid glands
- (4) 2, lateral, thyroid glands

55. PTH is a – [NCERT XI Pg. 335]

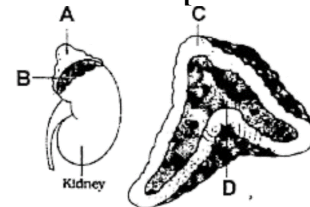
- (1) Hypocalcemic hormone
- (2) Hypercalcemic hormone
- (3) Antiosteoclastic hormone
- (4) A hormone which stimulate excretion of  $Ca^{+2}$  in urine

56. Which of the following endocrine glands degenerates / atrophies in old age?

[NCERT XI Pg. 335]

- (1) Thyroid
- (2) Thymus
- (3) Parathyroid
- (4) Adrenal

57. Observe the following diagrams and identify alphabetized items [NCERT XI Pg. 336]



- (1) A - Adrenal gland, B - Fat, C - Cortex, D - Medulla
- (2) A - JGA, B - Fat, C - Cortex, D - Medulla
- (3) A - Adrenal gland, B - Fat, C - Medulla, D - Cortex
- (4) A - Adrenal gland, B - Fat, C - Pars distalis, D - pars intermedia

58. Adrenaline and nor-adrenaline are commonly called – [NCERT XI Pg. 336]

- (1) Corticoids
- (2) Glucocorticoids
- (3) Catecholamines
- (4) Sex corticoids

59. The fight-or-flight response is developed by the hormones of – [NCERT XI Pg. 336]

- (1) Hypothalamus
- (2) Adrenal medulla
- (3) Adrenal cortex
- (4) Adrenal-pancreatic complex

60. B.P. is controlled by – [NCERT XI Pg. 337]

- (1) Adrenal gland
- (2) Thymus
- (3) Corpus luteum
- (4) None